

# The Conservationist



PPTU.org

Potomac-Patuxent Chapter Trout Unlimited

May 2019 • Published monthly except June, July, August and December

## ~~“Fly Fishing the DelMarVa Region”~~ SNAKEHEADS!!!

*May 15<sup>th</sup>, 2019*

This month's meeting presentation ("Fly Fishing the DelMarVa Region") has been updated to reflect the intense interest in snakeheads that has been blowing up the PPTU forum. Our scheduled speaker Joe Bruce literally wrote a book on fishing for snakeheads and will be presenting a multimedia talk on the subject.

Joe was the owner of The Fisherman's Edge fly shop in Catonsville, MD for 15 years before he retired to spend more time fishing. Joe continues to write many books to help his fellow anglers tackle saltwater, snakeheads, fly tying techniques, chain pickerel - and more! Joe also invents and sells custom leader systems plus bonefish, bass, saltwater, and shad flies in his spare time at his website.

[www.joebruce.net](http://www.joebruce.net)



Come on out to hear Joe talk about fishing for this weird resident in our waters that seems to be here to stay!

– *Karan Singh*

### Monthly Chapter Meetings

Time and Day: 7:00 PM, Third Wednesday except June, July, August and December  
Place: Margaret Schweinhaut Senior Center, 1000 Forest Glen Road, Silver Spring, MD 20901  
DIRECTIONS TO THE SENIOR CENTER  
From Capitol Beltway: North on Georgia Avenue (Rte. 97). First Right on Forest Glen Road,  
then go past Holy Cross Hospital and across Sligo Creek Parkway. The Center is on the right.

Visit our website: [www.pptu.org](http://www.pptu.org)

## OFFICERS and DIRECTORS 2018 – 2019

President: Alan Burrows: president@pptu.org  
Past-President: Bob O'Donnell  
Vice-President: Randy Dwyer  
Treasurer: Bob Kaiser  
Secretary: Patrick Masler  
Directors: Lee Canby  
George Opryszko  
Karan Singh  
Motti Tadmor  
Joe Taylor  
Chuq Yang

### Committee Chairs:

Fundraising: Rachel Dagovitz  
Forum Moderator: Chuq Yang  
Librarian: Lou Reichel  
Mentor Program: Ken Bowyer  
Membership Secretary: Jay Sheppard  
Conservationist Editor: Bob O'Donnell  
Outings: Lou Reichel: Outings@pptu.org  
Speakers Program: Karan Singh  
Conservation Advocacy: Jim Keil  
Project Healing Waters: Larry Vawter  
Ray Collette  
Publicity: Bob O'Donnell  
Raffles: Bob Kaiser  
Trout in the Classroom: Alan Burrows:  
Chuck Dinkel  
Water Quality: Vacant  
Webmaster: Ken Bowyer  
Motti Tadmor  
Youth Program: Chuq Yang

### Stream Committees:

Paint Branch: Joe Robinson  
Northwest Branch: Joe Robinson  
Middle Patuxent: Bryan Sirotkin  
Patuxent: Jay Sheppard

### Mid Atlantic Council Delegates:

Alan Burrows  
Bob Dietz: Secretary  
Randy Dwyer  
Jim Greene  
Marc Hutzell  
Lou Reichel  
Nick Weber

### Contact Us:

mail@pptu.org

## Presidents' Column - Alan Burrows



Ah, my swan song column (don't worry I won't sing). Let me start by telling you we still need more volunteers for Trout in the Classroom Release events in May and June. Come on folks. Get out of your comfort zone and give us a hand introducing 6th graders to the wonderful world of clean cold fishable water. Are you worried they know more than you? I can assure you they do not.

Presidents and past presidents don't get to do a "State of the Chapter" speech and I don't want to start one. I will say that we have a great new president, Randy Dwyer, coming on board and very impressive officers and board of directors. Many of these are great young leaders and they will take us well into the future. It is an exciting time to be a member of PPTU!

We are fortunate to have Lou Reichel as our outings chair. This job is a lot of work with darn little appreciation. Lou had done a tremendous amount of work and deserves a "job well done". If you have not had a chance to join us on an outing you are missing a great time. I should mention that Lou, along with Ken Bowyer, have done a great job to making sure that there are seasoned fisher people to help with novices.

Speaking of Ken Bowyer, I wish there was some way to further honor his commitment to Trout Unlimited. He was a wonderful treasurer, is a great mentor and quite the Web site guru. All in all quite the Renaissance man.

I could not have done this job without the friendship and guidance of both our past president Bob O'Donnell and our treasurer and my fishing buddy Bob Kaiser. They have both gone above and beyond their normal duties to help keep us on track.

It is my hope that our organization continues to focus on preserving clean cold fishable water. We will be looking at opportunities to solve a low dissolved oxygen problem on the lower Patuxent and we may have a chance to help Little Seneca Creek become a more sustainable trout stream. Both are

very worthwhile endeavors that will need the support of the entire organization.

I also believe it is vitally important that we continue to work with the youth in our area to champion clean cold fishable water. Sadly we are all getting older and we need to replace ourselves with new conservators of the environment we love. That means not only supporting Trout in the Classroom, but also reaching out to youth organizations and introducing kids to trout and trout water.



Thanks everyone for a wonderful two years of support. I hope to see you all on our rivers and streams fishing, teaching and supporting trout and their environment.

My last cast as president. Tight lines!

Alan Burrows  
President, PPTU



## PPTU Mentor Program Beginners & Beyond

Ken Bowyer provides one-on-one streamside fly fishing instruction to PPTU members. Participants must show commitment by having waders or hip boots, a rod and reel outfit, and leader. Discussions will include equipment, knots, casting, flies, dry fly and nymphing techniques, entomology, reading water, conservation, etc. at nearby streams. Instruction will be tailored to individual needs. Members who have not made an **Annual Supporting Contribution (ASC)** will be asked to contribute \$20.



Contact Ken at 301-627-7154 or by E-mail:  
[kenbowyer@verizon.net](mailto:kenbowyer@verizon.net) 🌻

## Snakehead Info - Sean Beck

Snakeheads are back!



There were a lot of questions regarding snakeheads on the list server last month. Here's some recent info for your reference.

DNR conveniently put out a number of videos a few weeks ago about snakeheads, including this one summarizing the most current regulations:  
<https://www.youtube.com/watch?v=yLxieaDldUI>

### Summary:

1. No bag limits
2. No size limits
3. Must have legal MD fishing license
4. Encouraged to keep
5. Must kill if in possession
6. If you wish to release the fish then do it immediately back where you caught it



## Stream Health - MD DNR

Maryland has over 10,000 miles of rivers and streams that reach through every corner of our State – from the Appalachians to the Eastern Shore.

They range from the mighty Potomac to small, unnamed creeks in our backyards. Our streams serve as the capillaries and arteries carrying water, life, and pollutants to the Chesapeake Bay. They provide recreational opportunities such as canoeing and fishing, help grow our crops, feed our reservoirs, serve as critical habitat for valuable and endangered species, and provide essential natural services to our environment. Every Maryland citizen lives within at least 15 minutes of a stream or river. What we do on our land directly influences the health of these valuable parts of Maryland's landscape.

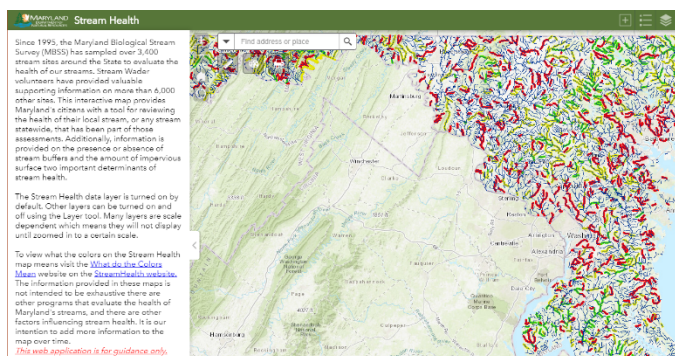
<https://dnr.maryland.gov/streams/Pages/streamhealth/default.aspx>

The MD DNR Stream Health web page is provided as a resource on the health of Maryland's streams, factors that impact that health, and to direct you to ways that you can become actively involved in protecting and restoring your streams.

At last chapter meeting we learned that the Maryland Biological Stream Survey (MBSS) has sampled over 3,400 stream sites around the State to evaluate the health of our streams. Part of the presentation showed a sample of an interactive map where you can explore the area streams and view their associate data. Take some time to check out the map and all its features. There are several menus to play with, if you focus on the map too hard you'll miss the menu in the upper right corner! You can even put markers in to find out how long it will take to go from stream to stream.

Have fun exploring!

<https://geodata.md.gov/streamhealth/>



If you spot poaching please place a call to the



**Catch a Poacher Hotline**  
**At**  
**1-800-635-6124**



*Add this number to your cell phone contact list!*

## Notice – Last Chapter Meeting and Newsletter Before Our Summer Break - PPTU

Just a reminder, especially for our new members, this will be our last chapter meeting and the last issue of the Conservationist until the summer break is over. We'll return to action come September!

Make sure you still check your email, the web forum, and visit the PPTU website to stay up to date on upcoming outings and events.

Our outings coordinator Lou Reichel will try to keep us busy fishing over the next three months. Maybe even throw in some summertime hotdog action streamside! We hope many of you keep posting notes and photos from all your fishing adventures.



Vacation notes are welcome as well. Its always fun to see all the places our members go.

*"I look into my fly box, and think about all the elements I should consider in choosing the perfect fly: water temperature, what stage of development the bugs are in, what the fish are eating right now. Then I remember what a guide told me: 'Ninety percent of what a trout eats is brown and fuzzy and about five-eighths of an inch long.'"*

~ Allison Moir



## PPTU Beer Tie - PPTU

Every 2<sup>nd</sup> Monday of each month. Old Line Wine Spirits and Bistro is our host. Stop by and check us out. We always have an extra vice and tools available for the curious or new tier. Show up early and try out the food! Tying Time: 7-9pm.

**Old Line Fine Wine, Spirits and Bistro**  
11011 Baltimore Ave. Beltsville, MD 20705



<http://www.oldlinewine.com/>

## Fly Fishing 101: The Roll Cast - Bob O'Donnell

Summer is almost here and the Spring showers helped all the trees leaf out, the grass shoot up and bushes take over the banks of our favorite streams.

At some point or another you're going to be limited to your options when it comes to casting. One good tool to have in your box is the roll cast!

This is a basic cast that can help keep your flies out of the trees and bushes that now surround you. The roll cast is something you can easily practice at home, it doesn't take a lot of space to perform and is worth taking the time to practice before you're out on the stream. Once you're on stream, practice some more. You'll notice a dramatic difference as the water tension helps load your rod to make the cast.

To make a roll cast, perform the following steps:

1. Start with your arm and rod in a normal backcast position.
2. Raise the rod up and slightly tilted out slightly so the fly line drapes behind your shoulder, like the rounded part of a capital D. Line up your elbow with your target.
3. When the loop drapes beyond your shoulder, make a sharp forward cast—accelerating the rod to an abrupt stop with the rod tip at eye level. The line will roll out in front of you.

This cast will help keep your flies out of the trees and bushes over the summer. If you find the wind blowing onto your casting arm, you can perform the same cast by simply angling the rod across your body. The casting steps are all the same. The roll cast is useful in other situations, too. You can use it to take slack out of the line before making a normal back cast or to bring a sinking fly line to the surface to pick up for a normal back cast.

Practice makes perfect! If you can't fish get out outside and practice casting for the next time you're out on the water.

If anyone needs some one-on-one time with their casting just give me a shout. I'm happy to get some teaching practice in. In the meantime, check out this roll casting video from Orvis:

<https://howtoflyfish.orvis.com/video-lessons/13-fly-casting/238-the-roll-cast>

## Shop Amazon Smile! - PPTU

Don't forget to shop Amazon Smile! Add the *Potomac-Patuxent Chapter* as your charity of choice to your Amazon account. If your company purchases through Amazon, ask them to help support us as well. Its free money in support of the chapter.

**Shop at AmazonSmile**  
and Amazon will make  
a donation to:

**Potomac Patuxent Chapter  
#236 of Trout Unlimited**

[Get started](#)

**amazon**smile



## Membership Bonus - Jay Sheppard

Don't forget to pick up your PPTU sticker at the next chapter meeting!

Everyone who has joined TU this past 6 months as a new PPTU member OR who has paid their Annual Supporting Contribution (ASC) for the year is now entitled to a decal indicating they are a PPTU member.



## Shop and Fish Local - PPTU

Our spotlight on several great fly shops in our area continues this month with one of latest shops to open up and serve our addiction, District Angling.

**District Angling** - District Angling offers a personalized team of instructors, craftsmen, and fly fishing experts. They're here to help you get on the water and be successful.

The staff are fly fishing junkies who love the sport, and try to fish as much as they can. They fish both locally and in exotic destinations. They also love helping other people enjoy the sport. There is over 100+ years of combined fly fishing experience, knowledge, and expertise among the staff.

Richard Farino is the founder of District Angling. He's an avid fly angler who spent most of his free time fishing the fresh and salt waters of the NYC metro area, the Catskills, and the Pocono mountains, he spent 15 years in the fly fishing industry working for retail shops and catalogs. When the northern Virginia area was suddenly without a full service fly shop, he created District Angling - a fly fishing retail, travel, instruction, and guiding business servicing the DMV area.

Take some time and visit the shop either online or better yet, in person!

<https://districtangling.com/>

## Izaak Walton League Cleanup - PPTU

Here's a photo of our own Jay Sheppard with the pile of trash collected from the recent IWLA cleanup.



We encourage our members to volunteer some of their time each year for this cleanup event. It would be great if you can spare some time and participate when it comes up again. IWLA give us a very generous donation every year from their annual Clay Shooting fundraising event and PPTU should return the favor in manpower and support during this environment cleanup day. Keep your eyes open for the next volunteer opportunity.

## Project Healing Waters Fly Tying Marathon - Michael Abramowitz

The DC chapter of PHW left by bus from the VA Hospital in DC. After loading up all the fly tying gear, and getting the bus wheel chair ramp to work we departed.





There were about 80 PHW volunteers tying a variety of flies until 3:30 PM. The DC PHW chapter volunteers were helping the Veterans tie flies. I spent the day with two Vets. One mastered the use of a Martinelli knot tying device. The 2nd person I spent time with learned about choice of hooks, parts of the hook and handling thread application when tying.

Two other Veterans were absolutely amazing. One was totally blind and the other Veteran had very limited vision. Both were guided to tie wooly buggers and thoroughly enjoyed themselves.



Many thanks to Bob Kaiser and all the PPTU members that donated some very nice flies.

“Semper Fi and Oohrah,” was heard all day.

## Richardson Chest Fly Box - Bob O'Donnell

While growing up in PA, I remember one Spring day standing in a trout stream and seeing an older gentleman approach. Instead of a fishing vest, he had this box contraption strapped around his neck. I watched in curiosity as he stopped to change flies. He flipped down a couple of panels before selecting a small dry fly with which he promptly caught a nice rainbow. I wandered over and asked him about his fly box. We had a nice chat and he was kind enough to entertain and yes, answer all the questions of a

young soul. Every now and again I would notice fishermen with these contraptions. I didn't really think much about them since. The last one I saw was at the fly fishing museum in PA, on display with other relics of fly fishing past. Then, it pops up on our own list server so I had to go investigate the Richardson Chest Fly Box.

As you may be aware, the concept of a hands free, easily accessible fly box worn on the angler's chest has been around for over 45 years. In 1951, Ronald Fye from central Pennsylvania handcrafted the first chest fly box (known then as The Fye Box) inspired by the Dean of American Fly fishing-George Harvey.

Rex "Chirp" Richardson purchased the company along with the patent in 1960 and renamed it The Richardson Chest Fly Box Company. Mr. Richardson made many improvements to the box over the years utilizing the recommendations from his customers and produced the box with such quality as to achieve world-wide renown. His customer list reads more like a WHO'S WHO of FLYFISHING: George Harvey, Joe Humphreys, Presidents Ike Eisenhower and Jimmy Carter, Dan Bailey Sr., Joan Wulff and Charlie Meck to name just a few. Rex continued to build the box, each custom handcrafted, until his death at the age of 80 in September of 1995. Rex Richardson was one of fly fishing's greatest craftsmen and a special friend to all who know him.



<http://www.chestflybox.com/>



**PPTU Swag!**  
**- Lou Reichel**

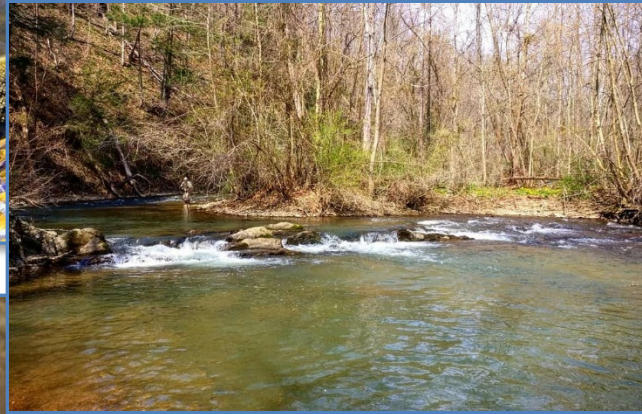
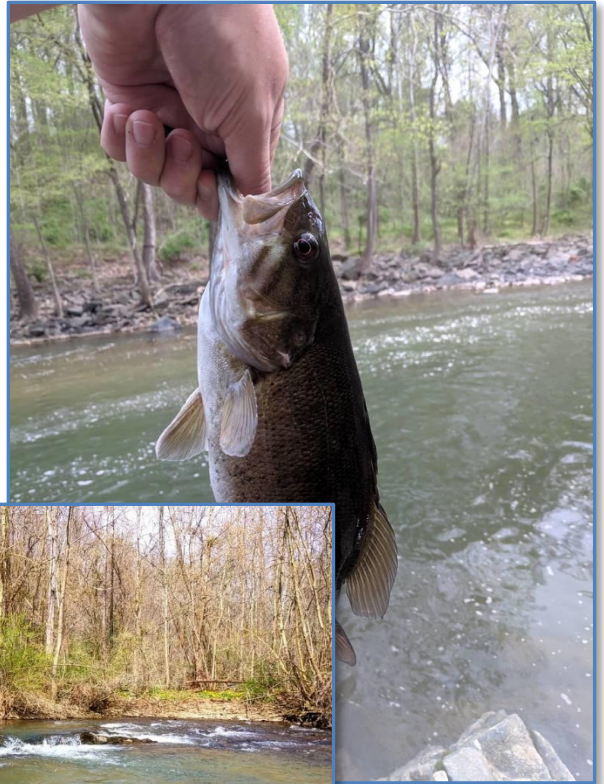
Don't forget to pick up some PPTU swag from the library table this month before we break for the summer. Show off your support for the chapter by wearing or using some gear with the PPTU logo on it. Let your fellow anglers recognize you on stream and spread the good word about the chapter to others that you meet and greet while fishing or just hiking around for fun. Stitched logo shirts can be ordered by going through Lou Reichel.





## Members Catch - PPTU

Wow! There were more great photos this last month than I anticipated. Hard to choose from. I'm glad a lot of you were out and about and hooking up.





Contributions should be sent to the Editor as plain text in an email or as an MS Word.doc attachment. The deadline for submissions is the twelfth (12th) day of the month prior to the month of publication.

**Editor: Bob O'Donnell**

Phone: 410-733-0638

Email: [TroutWrangler@yahoo.com](mailto:TroutWrangler@yahoo.com)



## Sulphur Usual

Well, it's that time again – you should start seeing Sulphurs out and about on the streams. The best way to fish the Sulphur, or any hatch, is to fish all phases, nymph, emerger and adult.

Before the actual hatch begins, Sulphur nymphs will become more active and the trout will begin keying in on them. Later switch over to emergers and then to this little guy and you should have a good day. Easy tie too.

<https://vimeo.com/44047724>



Return Address:  
Potomac-Patuxent Chapter TU  
P.O. Box 2865  
Wheaton, MD 20915